

# OPOS Demo AP

## USER'S GUIDE

Document #: PM080-O

Revision C

Nov 18, 2014

Table of Contents

1. Introduction.....2

2. Application(OPOS MSR Test) Installation.....2

3. How to use this program.....3

    3.1 Operation Procedures.....3

    3.2 About the OPOS control .....6

    3.3 Read Only Properties .....7

    3.4 EXIT .....8



## 1. Introduction

The **OPOS MSR Test** is an application that can be applied to test the OPOS compliance of the MSR. It is fully compliant with **UPOS 1.12** standard.

For further information on OPOS, please refer to "UnifiedPOS Retail Peripheral Architecture Version 1.12" specification.

## 2. Application(OPOS MSR Test) Installation

The program can be easily installed on any supported Windows operating system:

- Execute the installer file, for instance, "MSROPX1O.exe"
- Follow the on-screen instructions to complete the installation
- To run the program click **Start > Programs > MSR Test > MSR Test**

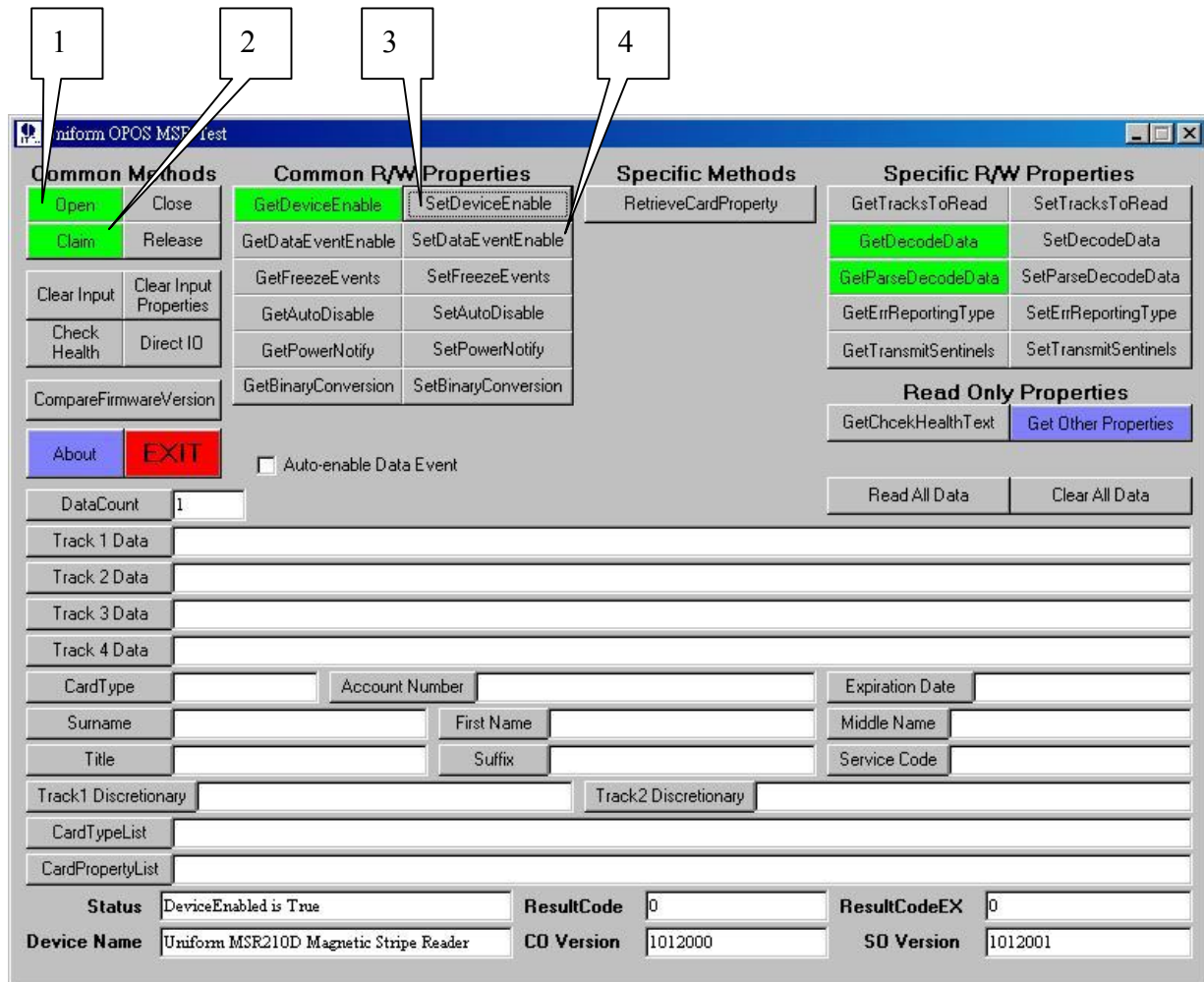
### Notice:

In addition to the Demo application, the installation will install the OPOS Common Control Objects version 1.12 to user's system so additional control objects are not needed if only for demo usage.

### 3. How to use this program

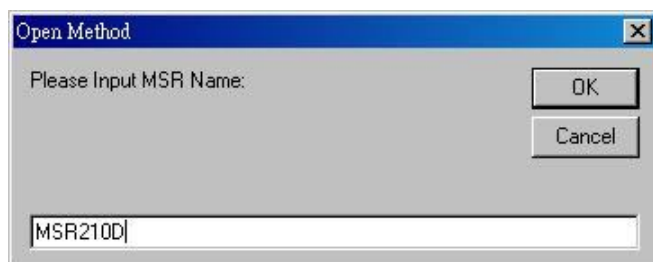
This section guides you how to successfully read the magnetic stripe card data.

#### 3.1 Operation Procedures



1. Click the **Open** button first, a dialog box as below will pop-up. Please enter an appropriate device name, and then click **OK**.

- A. MSR213U, MCH100 or MSR113U Keyboard mode's name=MSR210D
- B. MSR213U, MCH100 M-mode MSR113U mode's name=MSR213U



2. After the device is opened, click on **Claim** button to gain exclusive access to the device.

(Note: Then the device is disabled for other application)

3. Click the **SetDeviceEnable** button to make the device operational.

Now the application is ready to receive input from the device, you can swipe a credit card to read card data.

4. After reading card, click **SetDataEventEnable** to get the track data.

Click this button to get other read-only properties as shown in section 3.3

**Uniform OPOS MSR Test**

Common Methods	Common R/W Properties	Specific Methods	Specific R/W Properties
Open	GetDeviceEnable	RetrieveCardProperty	GetTracksToRead
Close	SetDeviceEnable		SetTracksToRead
Claim	GetDataEventEnable		GetDecodeData
Release	SetDataEventEnable		SetDecodeData
Clear Input	GetFreezeEvents		GetParseDecodeData
Clear Input Properties	SetFreezeEvents		SetParseDecodeData
Check Health	GetAutoDisable		GetErrReportingType
Direct IO	SetAutoDisable		SetErrReportingType
	GetPowerNotify		GetTransmitSentinels
	SetPowerNotify		SetTransmitSentinels
CompareFirmwareVersion	GetBinaryConversion		
	SetBinaryConversion		
About			
EXIT			

Auto-enable Data Event ☐

DataCount: 0

Track 1 Data: B4545234523355999^CHEN/COLS WWW.BDD ^040510713082 00567 000

Track 2 Data: 4545234523355999=04051071308256700000

Track 3 Data:

Track 4 Data:

CardType: BANK Account Number: 4545234523355999 Expiration Date: 0405

Surname: CHEN First Name: COLS Middle Name: WWW

Title: BDD Suffix: Service Code: 107

Track1 Discretionary: 13082 00567 000 Track2 Discretionary: 1308256700000

CardTypeList: AccountNumber,ExpirationDate,FirstName,MiddleInitial,ServiceCode,Suffix,Surname,Title

CardPropertyList: 4545234523355999,0405,COLS,WWW,107,,CHEN,BDD

Status: MSR Data Event Status = B00002546 ResultCode: 0 ResultCodeEX: 0

Device Name: Uniform MSR210D Magnetic Stripe Reader CO Version: 1012000 SO Version: 1012001

**Magnetic Stripe Card Data**

Status field: Display the Event return code

**Please Note:**

Option "Auto-enable Data Event" causes the demo AP to always re-enable DataEventEnable.

**As to other Methods and Properties, please refer to “UnifiedPOS Specification v1.12” for details.**

## 3.2 About the OPOS control

### How an application uses an OPOS control

Basically, the application follows this general sequence:

- Call **Open** method
- Call **ClaimDevice** method
- Set **DeviceEnabled** property to TRUE
- Use the device
- Set **DeviceEnabled** property to FALSE to disable the device
- Call **ReleaseDevice** method to release exclusive access to the device
- Call **Close** method to release the Service Object from the Control Object

### 3.3 Read Only Properties

**OPOS MSR Read Only Properties**

Common Read Only Properties

CapCompareFirmwareVersion	True	Claimed	True
CapPowerReporting	OPOS_PR_NONE	OpenResult	Success
CapStatisticsReporting	False	PowerState	OPOS_PS_UNKNOWN
CapUpdateFirmware	False	State	OPOS_S_IDLE
CapUpdateStatistics	False		
ControlObjectDescription	OPOS MSR Control 1.12.000 [Public, by CRM/RCS-Dayton]		
ServiceObjectDescription	MSR210D OPOS Service Object Ver.210OPS1Y, (C) 2009 Uniform		
DeviceDescription	Uniform MSR210D, USB HID Keyboard		

MSR Specific Read Only Properties

CapCardAuthentication	None	AdditionalSecurityInformation	None
CapDataEncryption	MSR_DE_NONE	CardAuthenticationData	None
CapDeviceAuthentication	MSR_DA_NOT_SUPPORTED	CardAuthenticationDataLength	0
CapISO	True		
CapISOOne	True		
CapISITwo	False		
CapTrackDataMasking	False		
CapTransmitSentinels	True		
CapWritableTracks	MSR_TR_NONE		

OK



### 3.4 EXIT

To quit the program, perform the following steps.

